

Little Sur River

ADLER RANCH

Conserving a crucial steelhead stream in the heart of Big Sur's redwoods

Monterey County, California



WESTERN RIVERS
CONSERVANCY

1.19



Amidst the world's southernmost naturally occurring redwoods and within earshot of the waves of the Big Sur coastline, Western Rivers Conservancy is working to conserve an 1,199-acre ranch along the Little Sur River. This important central California stream flows just over 25 miles from its headwaters in the Santa Lucia Mountains, within the Ventana Wilderness, down into a deep, redwood-shaded valley and into the Pacific just north of Andrew Molera State Park.

The Little Sur River flows through an area that provides excellent habitat for imperiled wildlife, including California spotted owl, endangered California condor and threatened California red-legged frog, as well as a wealth of other animals. The river is considered the Central Coast's most important and pristine spawning stream for threatened south-central coast steelhead, which once returned to this stretch of the California coast by the tens of thousands. Today, it is likely that fewer than 100 fish return to the Little Sur River each year, making our efforts to conserve the stream vitally important.

WRC is working to acquire the Adler Ranch, which lies at the edge of the Los Padres National Forest, 20 miles south of Monterey. Our acquisition of the ranch will conserve roughly a mile of the Little Sur River and some of the southernmost stands of old-growth redwood trees. It will also preserve important upland grasslands, oak woodlands and chaparral and madrone forest.

Like other redwoods on the Big Sur Coast, the trees on the Adler Ranch property have genetically adapted to the warm, dry climate of Big Sur. The trees could be extremely important for future efforts to assist redwood survival in a warming climate, making their conservation essential.

WRC's purchase of the ranch will link the protected lands on the coast to Monterey Peninsula Regional Park's Mill Creek Redwoods and the Los Padres National Forest, helping to ensure permanent habitat connectivity between the ocean and the crest of the Santa Lucia Mountains.

Acres: 1,199

River Miles: 1

Key Fish: South-central coast steelhead

Key Wildlife: California spotted owl, California condor, California red-legged frog, marbled murrelet, bald and golden eagle



In California, the Little Sur River links the Big Sur coast with the Santa Lucia Mountains and is considered the Central Coast's most important spawning stream for threatened south-central coast steelhead (pictured). Our efforts will conserve a mile of the stream, as well as old-growth redwoods and habitat for endangered California condor.

Ultimately, the ranch will be owned by the Esselen Tribe of Monterey County, whose ancestors have lived in this area since time immemorial. The Adler lands are sacred to the tribe, and will be available to tribal members for traditional ceremonies, native plant gathering, and repatriation and burial of tribal members. In addition, the tribe will offer a limited number of docent-led tours and activities for the school children and the general public, so that both the tourists who visit Big Sur from around the world and the citizens of California can enjoy this spectacular property and come to appreciate its significance to the Esselen Tribe.

For more information, please contact:

Sue Doroff, President

Western Rivers Conservancy

503-241-0151 | sdoroff@westernrivers.org

Little Sur River

Esselen Tribe of Monterey County

Adler Ranch

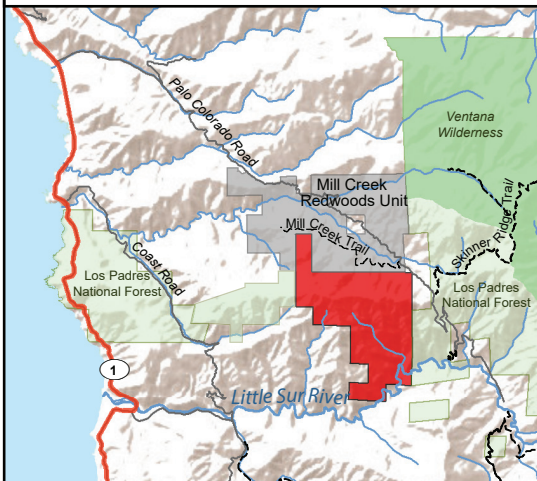
Monterey County, CA



WESTERN RIVERS
CONSERVANCY



Project Area Inset



Conservation Lands

 Adler property (1,199 acres)

Federal and State Lands

-  US Forest Service
-  US Forest Service Wilderness Areas
-  Bureau of Land Management
-  State Lands
-  US Department of Fish and Wildlife
-  Monterey Peninsula Regional Park District
-  Highways
-  Local Roads
-  Trails

0 2.25 4.5 9
Miles

